

Cripple Creek

American Fiddle Tune

Solo CD #17 Ensemble CD #45 Piano CD #72

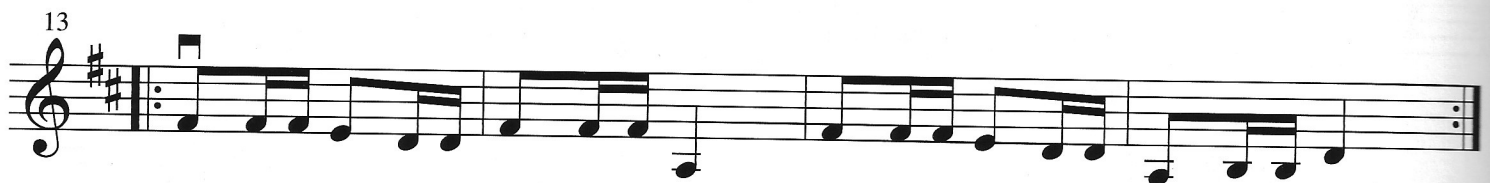
Notes used on these pages.



G0 G1 G2 D0 D1 D2 D3 A0 A1 A3 A4
G A B D E F# G A B D E

Allegro

Melody



Prep Exercises:

Learning to play quickly is very important to a string player. Here are some good ways to practice:

A. Slow practice of measures 9–12



B. Changing rhythm practice ideas measures 9–12

Slow, fast, slow, fast ...

Fast, slow, fast, slow ...

Burst of four notes



etc...

etc...

etc...

Allegro

Harmony

5

9

13

Allegro

Bass Line

5

9

13

Bile Them Cabbage Down, Old Joe Clark, and Cripple Creek can all be played together in a traditional fiddle set.
 Any of these pieces can be played with a traditional or improvised ending tag.